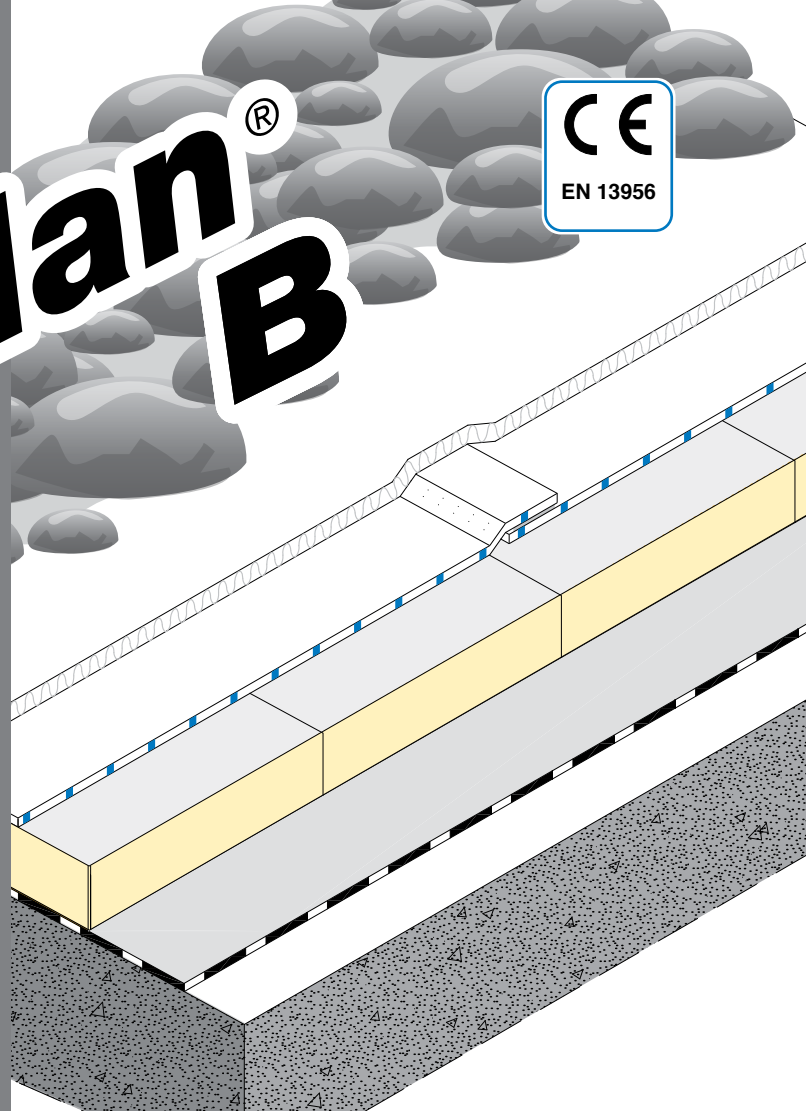


# Mapeplan® B



## Roofing and waterproofing synthetic membrane



### DESCRIPTION

**Mapeplan® B** is a synthetic roofing waterproofing membrane in PVC-P produced in one **multiextrusion coating process**, with high quality raw materials, reinforced with glass mat. **Mapeplan® B** is conform to EN 13956 standard.

### APPLICATION FIELDS

**Mapeplan B** is suitable for ballasted, utility deck (pedestrian-parking) and roof garden systems. It is resistant to ultraviolet rays.

### NORMS AND CERTIFICATIONS

CE conformity marking according to EN 13956 standard.  
ISO 9001 quality system certification.  
ISO 14001 environmental system certification.  
FLL root resistance certification.  
**Mapeplan® B** can contribute in the collection of LEED (Leadership in Energy and Environmental Design) Credits.



### TECHNICAL CHARACTERISTICS

**Mapeplan® B** is a high standard quality product; it performs very good mechanical properties, best workability as well as excellent welding characteristics.

- Resistant to microbiological attacks and root-resistant
- High workability and weldability
- High mechanical resistance
- Excellent flexibility at low temperatures
- Excellent resistance to ageing
- Excellent resistance to UV rays and to weathering
- High vapour permeability

### PACKAGING

<b>PALLET</b>	14 rolls per pallet
<b>LENGTH OF ROLLS</b>	20 m 15 m 10 m (according to the thickness)
<b>WIDTH OF ROLLS</b>	2,10 m

### STORAGE

Store horizontally, shelter from sun and bad weather in a dry place.

### SAFETY INSTRUCTION

**Mapeplan® B** is not considered dangerous according to the current safety regulation for the classification of goods and substances. The safety datasheet is therefore not compulsory for the purchase, transport and application. Precaution during use: ensure a proper change of air if the application is made in closed working environments.

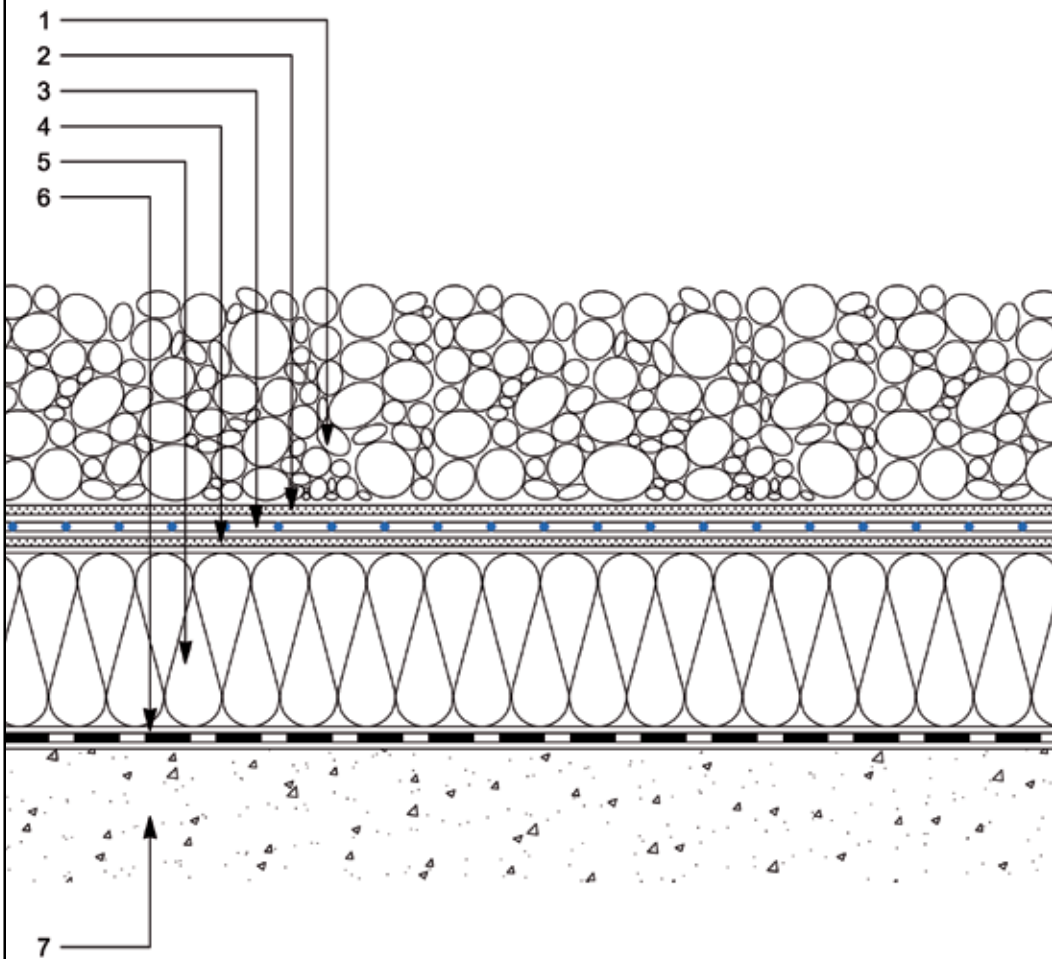
TECHNICAL DATA					
PRODUCT PROPERTIES					
Product	Waterproofing membrane in PVC-P, reinforced with glass mat, specially formulated against the aggression of bacterial flora and microorganisms				
Colour	Top layer: light grey Bottom layer: dark grey				
European standard	EN 13956				
CHARACTERISTICS STANDARDS - M.U.		Mapeplan® B 15	Mapeplan® B 18	Mapeplan® B 20	Mapeplan® B 24
Visible defects	EN 1850-2	None	None	None	None
Length (m)	EN 1848-2	20 (-0/+5%)	15 (-0/+5%)	15 (-0/+5%)	10 (-0/+5%)
Width (m)	EN 1848-2	2,10 (-0,5/+1%)	2,10 (-0,5/+1%)	2,10 (-0,5/+1%)	2,10 (-0,5/+1%)
Straightness (mm)	EN 1848-2	≤ 30	≤ 30	≤ 30	≤ 30
Flatness (mm)	EN 1848-2	≤ 10	≤ 10	≤ 10	≤ 10
Mass per unit area (kg/m <sup>2</sup> )	EN 1849-2	1,8 (-5/+10%)	2,2 (-5/+10%)	2,5 (-5/+10%)	3,0 (-5/+10%)
Effective thickness (mm)	EN 1849-2	1,5 (-5/+10%)	1,8 (-5/+10%)	2,0 (-5/+10%)	2,4 (-5/+10%)
TECHNICAL CHARACTERISTICS		Mapeplan® B 15	Mapeplan® B 18	Mapeplan® B 20	Mapeplan® B 24
Watertightness EN 1928 B Method		Watertight	Watertight	Watertight	Watertight
Reaction to fire EN 13501-1		Class E	Class E	Class E	Class E
Joint peel resistance EN 12316-2 (N/50 mm)		≥ 300	≥ 300	≥ 300	≥ 300
Joint shear resistance EN 12317-2 (N/50 mm)		≥ 500	≥ 500	≥ 500	≥ 500
Vapour diffusion resistance EN 1931 (μ)		19000	19000	19000	19000
Tensile strength EN 12311-2 (N/mm <sup>2</sup> )		≥ 9	≥ 9	≥ 9	≥ 9
Elongation at break EN 12311-2 (%)		≥ 200	≥ 200	≥ 200	≥ 200
Resistance to impact - rigid support (A method) - flexible support (B method) EN 12691 (mm)		≥ 400 ≥ 1100	≥ 600 ≥ 1500	≥ 700 ≥ 1750	≥ 800 ≥ 1750
Resistance to static load - flexible support (A method) - rigid support (B method) EN 12730 (kg)		≥ 20 ≥ 25	≥ 25 ≥ 30	≥ 25 ≥ 30	≥ 30 ≥ 35
Tear resistance EN 12310-2 (N)		≥ 100	≥ 100	≥ 100	≥ 100
Dimensional stability EN 1107-2 (%)		≤ 0,2	≤ 0,2	≤ 0,2	≤ 0,2
Foldability at low temperatures EN 495-5 (°C)		≤ -25	≤ -25	≤ -25	≤ -25
UV exposure EN 1297 (5000 h)		grade 0 - passes	grade 0 - passes	grade 0 - passes	grade 0 - passes
Resistance to root penetration EN 13948 - Test FLL		conform	conform	conform	conform

Considering the various situations of use, the numerous types of support surfaces and the possibilities for use inside COMPLEX WATERPROOF LAYERING, Polyglass S.p.A. cannot assume any liability for damages derived from the product's results in terms of function or aesthetics.  
Technical Data Sheet Rev. 1/21

## MAPEPLAN® ACCESSORIES

- Mapeplan® D, membrane for details and particulars
- Mapeplan®, metal sheets coupled to Mapeplan® membrane
- Mapeplan®, internal and external prefabricated corners
- Mapeplan® ADS 200 and ADS 210, contact adhesives
- Mapeplan® Cleaner, cleaning liquid
- Mapeplan®, outlets and special prefabricated pieces

## MAPEPLAN® B ROOF BUILD-UP



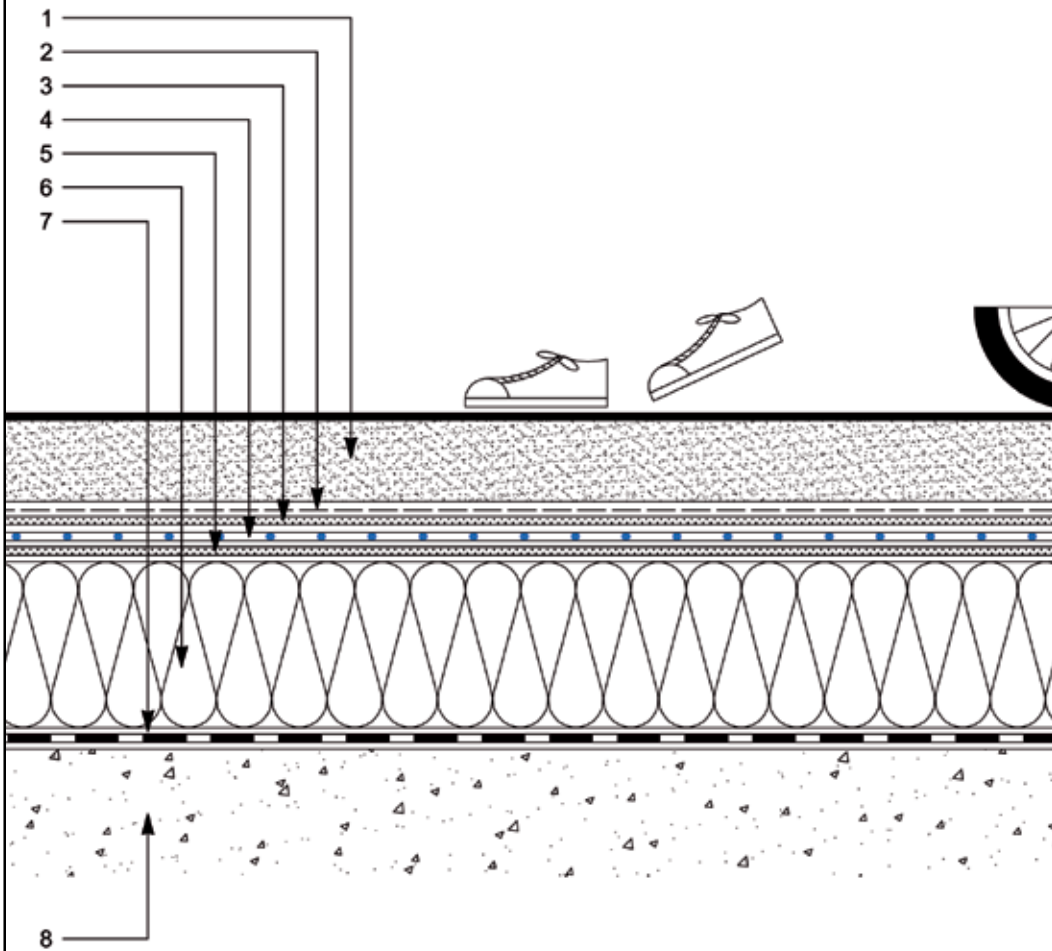
- Resistant to ageing processes
- Root action resistant
- Resistant to microbiological attacks
- Flexible at low temperatures
- Puncture resistant
- High workability and weldability
- UV-resistant
- Vapour permeable
- Dimensionally stable
- Excellent fire behaviour

Technical specifications of product are available on the technical books.  
References for this product are available on request and on Mapei and polyglass web sites at the following addresses [www.mapei.it](http://www.mapei.it), [www.mapei.com](http://www.mapei.com) and [www.polyglass.com](http://www.polyglass.com)

### LEGEND

1. Layer of ballast, gravel
2. Protection layer (for example POLYDREN)
3. MAPEPLAN® B, roofing membrane
4. Separation layer, if necessary (for example POLYDREN)
5. Thermal insulation
6. Vapour control layer (for example MAPEPLAN® VB PE)
7. Substrate

## MAPEPLAN® B ROOF BUILD-UP



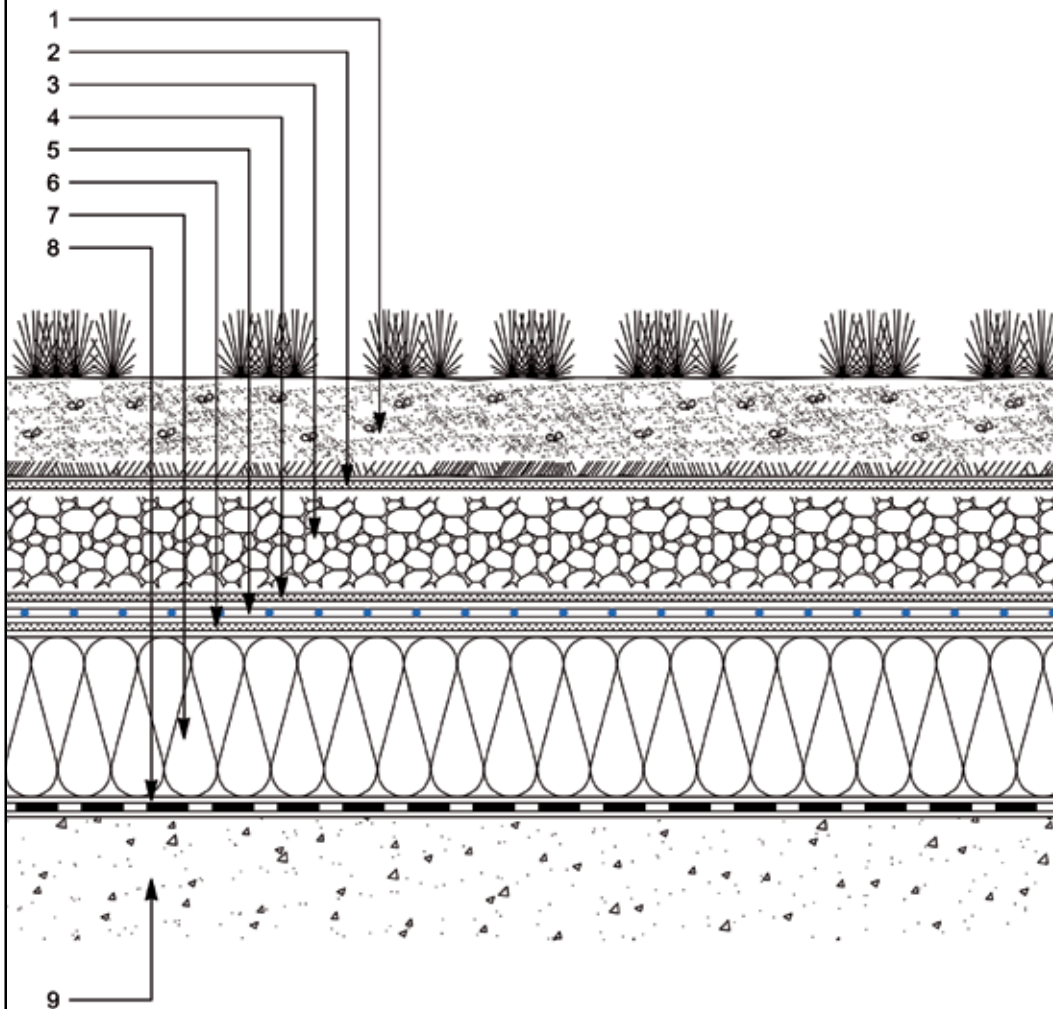
- Resistant to ageing processes
- Root action resistant
- Resistant to microbiological attacks
- Flexible at low temperatures
- Puncture resistant
- High workability and weldability
- UV-resistant
- Vapour permeable
- Dimensionally stable
- Excellent fire behaviour

Technical specifications of product are available on the technical books.  
References for this product are available on request and on Mapei and polyglass web sites at the following addresses [www.mapei.it](http://www.mapei.it), [www.mapei.com](http://www.mapei.com) and [www.polyglass.com](http://www.polyglass.com)

### LEGEND

1. Layer driveway, cement screed with a wear layer
2. Antimibizione layer  
(for example MAPEPLAN® PE micro-perforated)
3. Protection layer
4. MAPEPLAN® B, roofing membrane
5. Separation layer, if necessary  
(for example POLYDREN)
6. Thermal insulation
7. Vapour control layer  
(for example MAPEPLAN® VB PE)
8. Substrate

## MAPEPLAN® B ROOF BUILD-UP



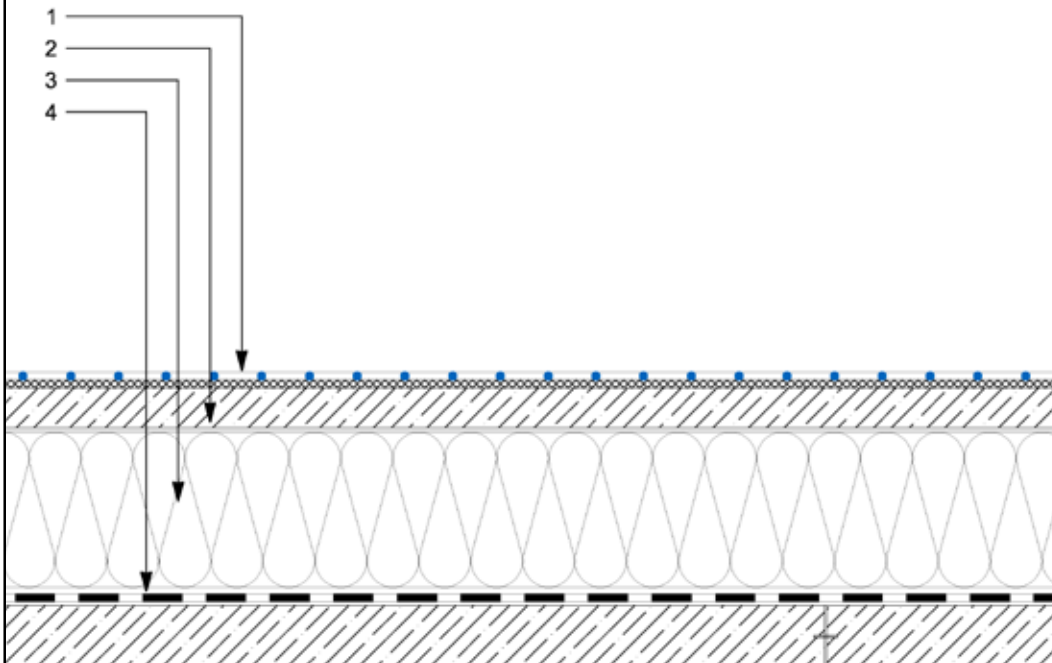
- Resistant to ageing processes
- Root action resistant
- Resistant to microbiological attacks
- Flexible at low temperatures
- Puncture resistant
- High workability and weldability
- UV-resistant
- Vapour permeable
- Dimensionally stable
- Excellent fire behaviour

Technical specifications of product are available on the technical books.  
References for this product are available on request and on Mapei and polyglass web sites at the following addresses [www.mapei.it](http://www.mapei.it), [www.mapei.com](http://www.mapei.com) and [www.polyglass.com](http://www.polyglass.com)

### LEGEND

1. Growth medium
2. Filter layer (for example POLYDREN)
3. Drainage layer
4. Protective layer (for example POLYDREN)
5. MAPEPLAN® B, roofing membrane
6. Separation layer, if necessary (for example POLYDREN)
7. Thermal insulation
8. Vapour control layer (for example MAPEPLAN® VB PE)
8. Substrate

## MAPEPLAN® B ROOF BUILD-UP



5

- High solar reflectance
- Environmental friendly
- Resistant to ageing processes
- Root-resistant
- Resistant to microbiological attacks
- Flexible at low temperatures
- Puncture resistant
- UV-resistant
- High workability and weldability
- Vapour permeable
- Formulation without plasticizers
- Dimensionally stable
- Excellent fire behaviour

Technical specifications of product are available on the technical books.  
References for this product are available on request and on Mapei and polyglass web sites at the following addresses [www.mapei.it](http://www.mapei.it), [www.mapei.com](http://www.mapei.com) and [www.polyglass.com](http://www.polyglass.com)

### LEGEND

1. Mapeplan® B adhered, roofing membrane
2. Wood substrate
3. Thermal insulation
4. Vapour barrier (for example Polyvap SA)
5. Wood substrate



---

MAPEPLAN® range is produced by:



Registered Office: Viale E. Jenner, 4 - 20159 MILANO

Head Office: Via Giorgio Squinzi, 2 - 31047 Ponte di Piave (TV) - Italy  
Tel. +39 04227547 - Fax +39 0422854118 - [www.polyglass.com](http://www.polyglass.com) - [info@polyglass.it](mailto:info@polyglass.it)